



HARDWARE GUIDE



CONTENTS

CAMERA

DFRobot IR Camera
DIY WiiMote Conversion

STATUS LED

Common Cathode
Common Anode
5V NeoPixel

RUMBLE

DIY Setup

SOLENOID

DIY Setup
MOSFET Module Setup

ANALOG STICK

DIY Setup

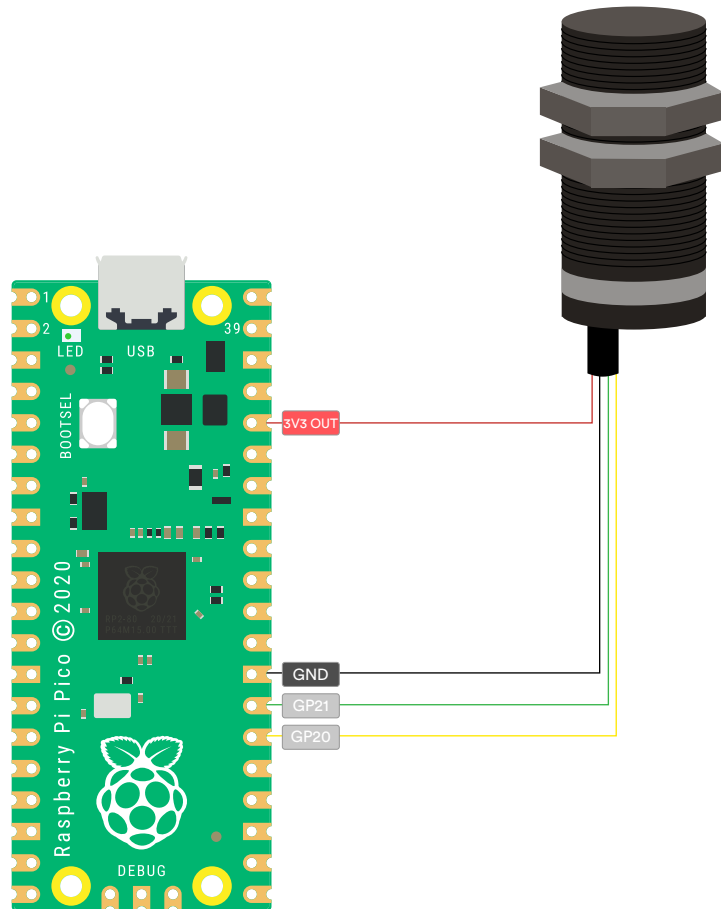
BUTTONS

Default Layout

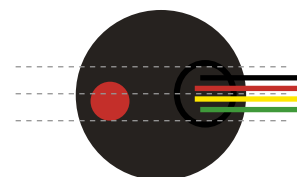
Disclaimer: This DIY guide is provided for educational and informational purposes only. The steps outlined in this guide involve working with electronic components, which may pose risks if not handled properly. Please proceed with caution and ensure you have the necessary skills and knowledge to safely complete this project. The author assumes no responsibility for any injury, damage, or loss that may occur as a result of following this guide. By proceeding with this project, you agree to take full responsibility for your actions and any outcomes. Always prioritize safety and consult a professional if needed.

CAMERA

DF ROBOT IR CAMERA



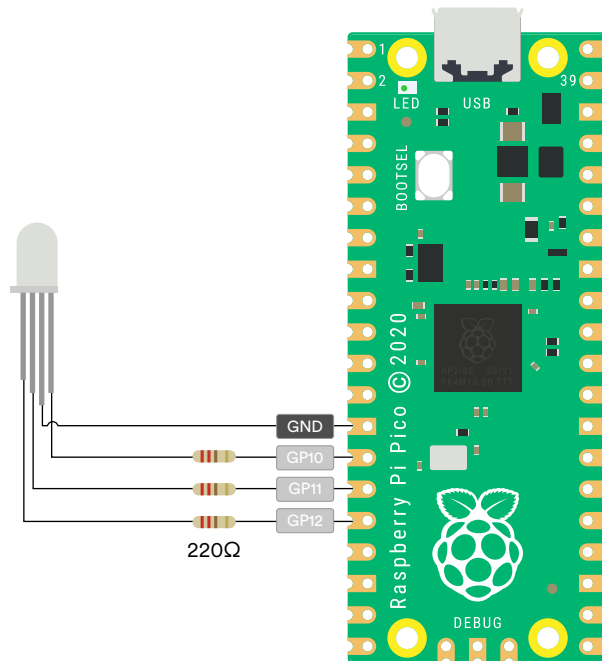
Camera Alignment
(test in App after construction
for best results)



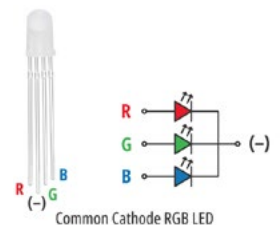
Red - VCC+
Black - GND
Green - SCL
Yellow - SDA

STATUS LED

4-PIN COMMON CATHODE

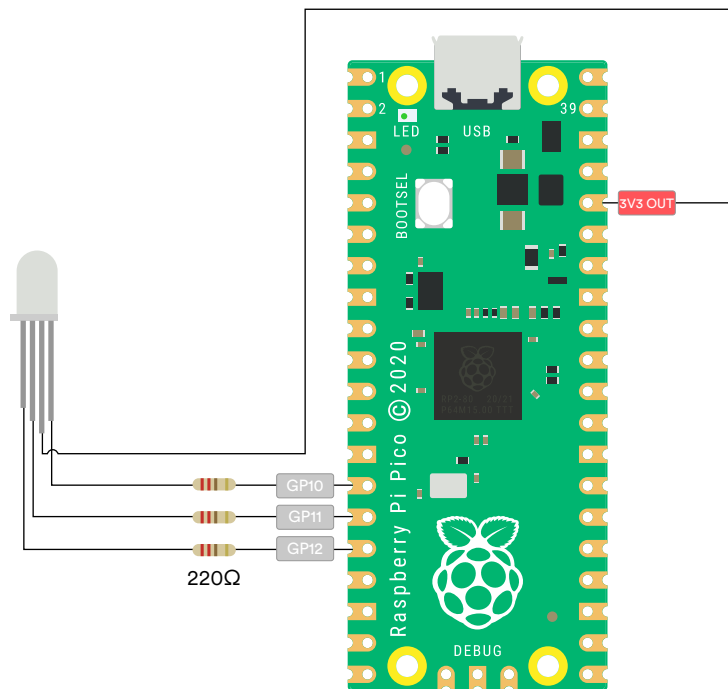


NOTE:
Individual pins can be
reassigned in the App
if needed.

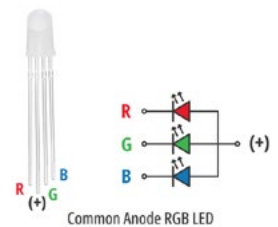


STATUS LED

4-PIN COMMON ANODE

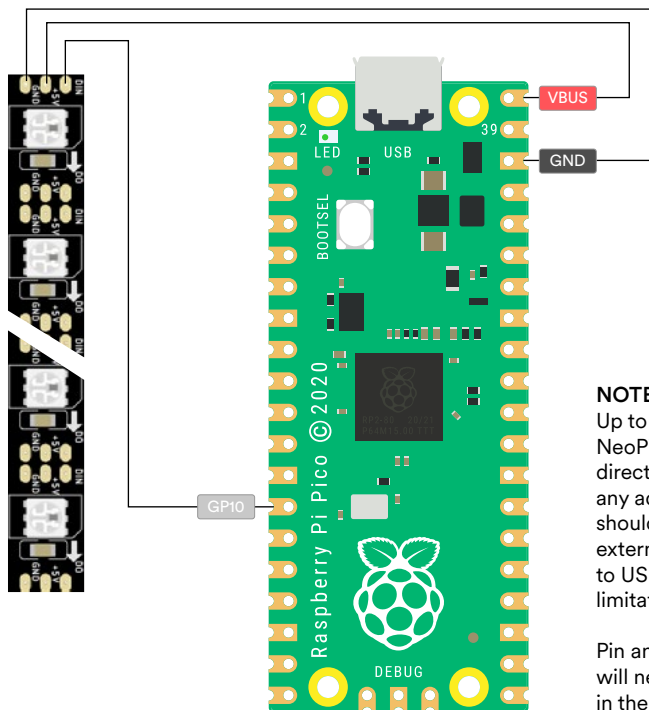


NOTE:
Individual pins can be
reassigned in the App
if needed.



STATUS LED

5V NEOPIXEL



NOTE:

Up to three/four NeoPixels can be run directly off VBUS - any additional pixels should be driven by external voltage due to USB amp draw limitations.

Pin and extra settings will need to be setup in the App.



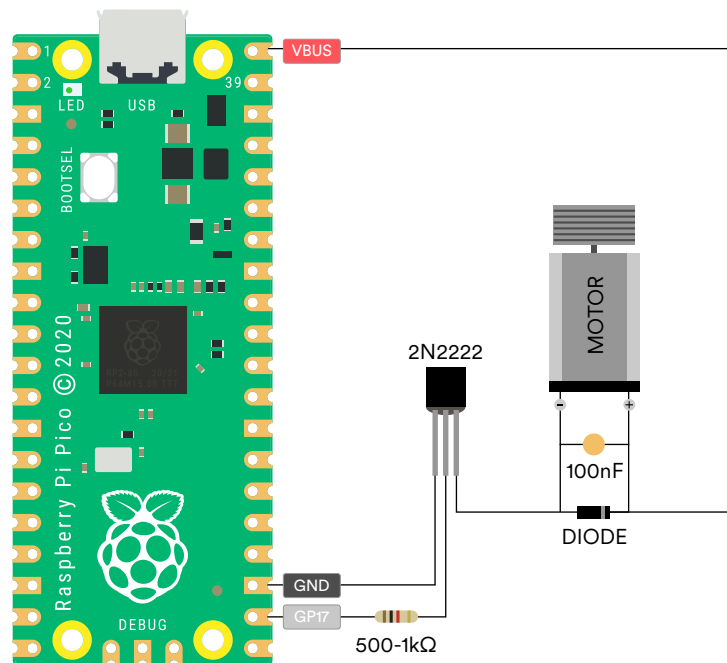
RUMBLE

DIY SETUP

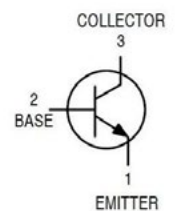
TRANSISTORS:
2N2222

RUMBLE MOTORS:
N20

Diodes:
1N4001 (Obsolete)
1N4007



2N2222



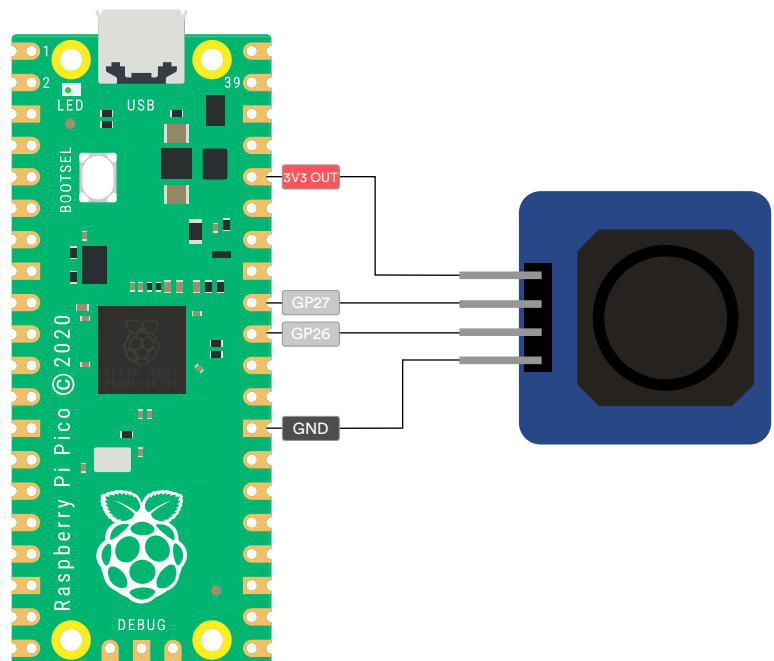
ANALOG STICK

DIY SETUP

NOTE:

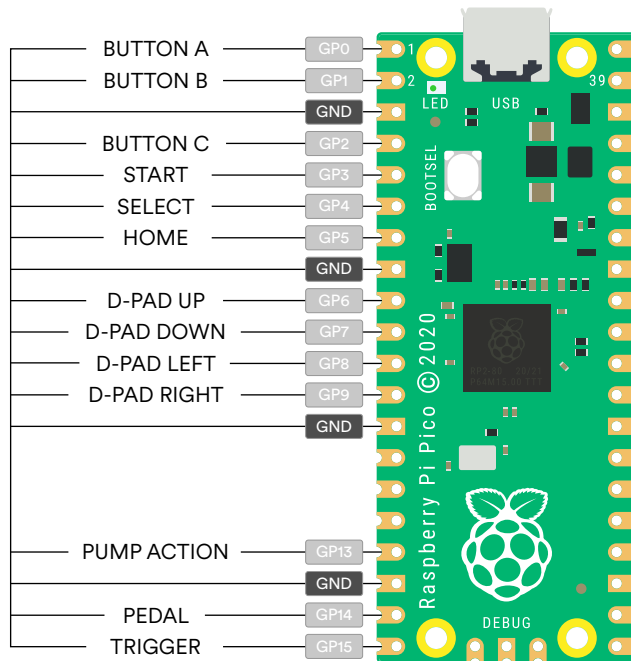
There are many versions of these so check your pin-outs carefully.

Suggested Pins
(these need to be assigned to analog pins and will need to be allocated in the App).

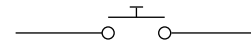


BUTTONS

DEFAULT LAYOUT



Buttons are all assigned internal pull-up resistors so no extra hardware is needed. Any momentary, normally open button will work.



NOTE:
Buttons can be reassigned in the App if needed.

